

# COMP-A-NEB



GUARANTEED

3

YEARS



## AEROSOL CON COMPRESSORE A PISTONE PER USO PROFESSIONALE

*PISTON COMPRESSOR NEBULIZER FOR  
PROFESSIONAL USE*

### DATI TECNICI COMPRESSORE

COMPRESSORE .....	A PISTONE
PRESSIONE MASSIMA .....	250 kPa
PRESSIONE D'ESERCIZIO .....	0 ÷ 110 kPa
PORTATA D'ARIA .....	15 lt/min
CICLO DI UTILIZZO .....	CONTINUO
RUMOROSITÀ .....	55 dBA
DIMENSIONI .....	196 x 357 x 185 mm
PESO .....	2,5 kg
CLASSE DI RISCHIO .....	IIa

### COMPRESSOR TECHNICAL DATA

COMPRESSOR .....	PISTON COMPRESSOR
MAX PRESSURE .....	250 kPa
OPERATING PRESSURE .....	0 ÷ 110 kPa
AIR FLOW .....	15 lt/min
OPERATING CYCLE .....	CONTINUOUS
NOISE LEVEL .....	55 dBA
DIMENSION .....	196 x 357 x 185 mm
WEIGHT .....	2,5 kg
MDD CLASS .....	IIa



# COMP-A-NEB

## ACCESSORI

AMPOLLA FASTERJET CON SISTEMA VALVOLARE (POLIPROPILENE)  
DOCCIA NASALE (POLIPROPILENE)  
NASALE (POLIPROPILENE)  
BOCCAGLIO (POLIPROPILENE) CON VALVOLA (SILICONE)  
MASCHERA ADULTO (PVC DOP FREE)  
MASCHERA PEDIATRICA (PVC DOP FREE)  
TUBO ARIA (PVC DOP FREE)  
FILTRO DI RICAMBIO  
ELASTICI

## ACCESSORIES

FASTERJET NEBULIZER WITH VALVE SYSTEM (POLYPROPYLENE)  
NASAL SHOWER (POLYPROPYLENE)  
NOSEPIECE (POLYPROPYLENE)  
MOUTHPIECE (POLYPROPYLENE) WITH VALVE (SILICONE)  
ADULT MASK (PVC DEPH FREE)  
CHILD MASK (PVC DEPH FREE)  
AIR TUBE (PVC DEPH FREE)  
SPARE FILTER  
ELASTIC

## DATI TECNICI AMPOLLA

CAPACITÀ.....16 ml  
FRAZIONE RESPIRABILE < 5 µm.....80%  
MMAD (Mass Median Aerodynamic Diameter).....2,7 µm  
NEB RATE.....0,60 ml/min  
VOLUME RESIDUO.....0,7 ml

## NEBULIZER TECHNICAL DATA

CAPACITY.....16 ml  
RESPIRABLE VOLUME < 5 µm.....80%  
MMAD (Mass Median Aerodynamic Diameter).....2,7 µm  
NEB RATE.....0,60 ml/min  
RESIDUAL VOLUME.....0,7 ml



MASCHERA ADULTO  
ADULT MASK



TUBO ARIA  
AIR TUBE



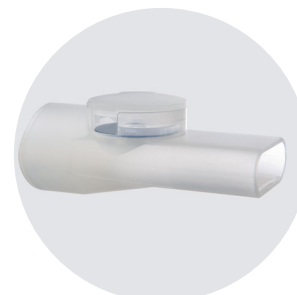
AMPOLLA FASTERJET  
FASTERJET NEBULIZER



DOCCIA NASALE  
NASAL SHOWER



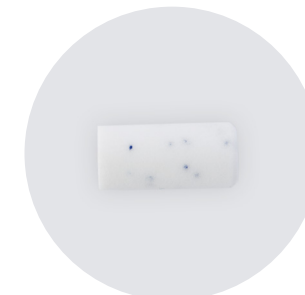
MASCHERA PEDIATRICA  
CHILD MASK



BOCCAGLIO CON VALVOLA  
MOUTHPIECE WITH VALVE



NASALE  
NOSEPIECE



FILTRO POREX  
FILTER POREX

CE 0051

(dir. 93/42/EEC)

PCS

2

MASTER CARTON